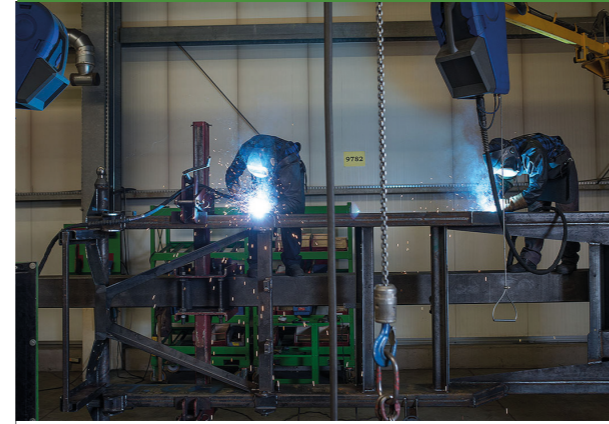


Technical data

TS 160
with tyres 710/70 R 38

Dimensions	
Length [m]	8,84
Height [m]	3,35
Outer wheel width [m]	3,00
Loading height [m]	2,75
Tare weight	
with 2-beater spreading unit [kg]	6.600
Gross vehicle weight rating	
Gross vehicle weight rating [kg]	14.000
Techn. total weight [kg]	16.000
Power requirement	
Power requirement [kW/HP]	88/120
Container dimensions (inside)	
Length up to slurry door [m]	5,43
Length up to spreading unit [m]	6,00
Height [m]	1,38
Width below [m]	1,45 - 1,49
Width above [m]	1,75 - 1,79
Width above (with extensions) [m]	2,28
Volume	
Volume [m ³]	15,9
Volume up to slurry door [m ³]	14,4
Spreading unit	
Spreader unit channel [m]	1,65
Slurry door channel [m]	1,65

Figures, technical data and weights may change due to technical development and are not binding for delivery.



www.straumann.com



Flatbed spreader



TS-Streuer



B. Straumann & Söhne GmbH u. Co. KG



Bielefelder Straße 53
D-49196 Bad Laer
Tel.: +49(0)5424/802-0
Fax: +49(0)5424/802-76
info@straumann.com

980502Z/08-2018

Powerful & robust -The new TS 1601 by Straumann



Solid 2-beater spreading unit for highest throughput rates and long service life

Large trough
Low centre of gravity and flat charging height

Robust transport floor due to two round steel chains with a breaking load of 28 t each

Robust axle
With large tyres for little rolling resistance

Strong performance due to solid technology



Trough & transport floor

- V-shaped trough due to bent section
→ Galvanised bottom plate and 4 mm thick side panels
- Easy discharge due to conical design
- Optional extensions for maximum loading capacity
- Strong transport floor with two solid round steel chains (16 mm strong)
- Optimum emptying due to cleaning strips
- Drive via powerful hydraulic motor and self-cleaning sprockets



Vertical spreading unit

- Two upright spreaders with a diameter of 880 mm
- Throwshovels at the lower end for fine distribution
- Passage of 1.65 m in height and 1.71 in width enables maximum efficiency
- 10 mm auger windings and 12 mm milling tines for a long service life
- Protection via cam-type cut-out clutch



Robust chassis

- BPW single axle
- Large tyres with a diameter of more than 2 m possible
- Technically admissible axle load of 12 t
- Slim drawbar for good manoeuvrability
- Standard drawbar suspension via spring assembly

Straumann operating options



- Simple direct connection: Setting of transport floor speed at the front panel
- Direct connection with E-control light: Speed monitoring of spreading unit as well as speed adjustment and reversing of transport floor
- Electro-hydraulic with E-control: Operation via toggle switches, oil supply via control device or load-sensing hydraulics

