

30 % less  
wear!



## Perfect mixing quality with Strautmann ORIGINAL PARTS!

We tested:

- Replica fodder mixing wagon knives compared to Strautmann ORIGINAL knives with hardened blade
- Test setup: In a Verti-Mix 2401 Double, a mixing auger was equipped with replica knives. The second mixing auger was equipped with Strautmann ORIGINAL knives. After 2-year use with about 15,000 t of mixed fodder, we evaluated the result:

### Replica

No more cutting  
performance!

Considerable abrasion

Serrated edges hardly  
existing

Knife tip <1 mm  
of residual thickness

- Frequent change of knives
- Poor mixing result
- Inadequate supply of herd

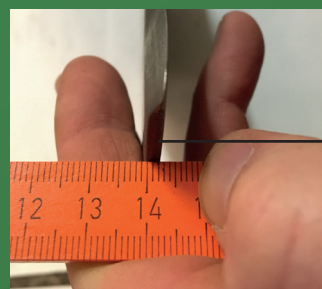


 **strautmann**  
ORIGINAL PARTS

Cutting performance  
still existing!

Considerably less  
wear

Serrated edges  
undamaged



- ✓ Cost-effective
- ✓ Consistent mixing quality
- ✓ Optimum supply of herd

 **strautmann**  
ORIGINAL PARTS