



Flatbed spreader

TS spreader



Powerful & robust

–The Strautmann TS spreader



Large trough
Low centre of gravity
and flat charging height

**2-beater spreading unit or
universal spreading unit**
for highest throughput rates
and long service life

Robust transport floor
due to two round steel chains
with a breaking load of 28 t each

Robust axle
With large tyres for
little rolling resistance

TS spreader models

With the TS spreader models, Strautmann has been offering a special design of manure spreaders: The TS spreader models excel by robustness combined with a particularly high throughput rate. Large-sized tyres and the low centre of gravity ensure improved ground protection and safe driving on slopes.

- TS 140 and 160
- Technical gross weight of 14 – 16 t
- Gross vehicle weight rating of 13 – 14 t
- Low centre of gravity and flat loading height
- Large tyres for little rolling resistance

Contents

Spreading units	4
Best spreading quality	5
Superstructure and floor	6–7
Precision Farming	8–9
Operating options	10
Technical data	11

For utmost precision and efficiency

– The spreading units

Enormous robustness combined with highest efficiency and impressive throughput rate – these features distinguish the spreading units of the TS series. The vertical 2-beater spreading unit distributes manure and other coarse spreading materials with particular power – and with optimum working quality.

The 2-disc universal spreading unit makes the TS spreader a real all-rounder. That enables you to extend the range of applications and to spread all fine crumbled spreading materials in a particularly precise and even manner up to a width of 24 m.



Vertical 2-beater spreading unit

- Two upright beaters with a diameter of 880 mm
- Throwshovels at the lower end for fine distribution
- Passage of 1.65 m in height and 1.71 in width enables maximum efficiency

- 8 mm auger windings and 12 mm milling tines for a long service life
- Protection by means of cam-type cut-out clutch
- High throughput rate due to large spreading unit clearance and spreading beater diameter



Universal spreading unit

- Optionally available
- 2-disc wide-angle spreading unit
- Spreading discs with 6 throwshovels as standard equipment
- Wearing parts made of Hardox
- 12 mm thick tines, can be turned over for double the service life
- Universally usable for different spreading materials
- Spreading beaters crush the spreading material and feed it to the discs
- The fine and even distribution ensures optimum nutrient supply of the soil
- Due to adjustable throwshovels, spreading widths of up to 24 m are reached

Gimbal spreading unit drive

- Low amount of maintenance required with long service life
- Reliable power transmission
- Very smooth running

Technical modifications reserved



Technical modifications reserved

Robust and intelligent design

– Superstructure and floor

Straightforward design, robust construction – these features distinguish the superstructure of the TS spreader. Thus, your machine is prepared for highest loads:



Trough and extensions

- Optional extensions for maximum loading capacity
- Conical trough for fast and complete unloading of all spreading materials
- Robust, 4 mm thick side walls



Transport floor

- Strong transport floor with two solid round steel chains (16 mm thick)
- Drive via powerful hydraulic motor and self-cleaning sprockets
- Automatic scraper floor chain tensioner for minimum maintenance
- Fully welded and powder-coated steel floor

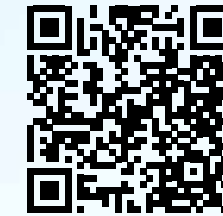


Robust chassis

- BPW single axle
- Large tyres with a diameter of more than 2 m possible
- Technically admissible axle load of 12 t
- Slim drawbar for good manoeuvrability
- Standard drawbar suspension via spring assembly

See machines in action:

Just scan the QR code or visit the Strautmann YouTube Channel.



Exact weighing & efficient fertilising

– Precision Farming

The Strautmann ISOBUS control enables discharge of spreading materials according to position. Thanks to the data and GPS-aided control, the spreading material can be accurately spread where it is required in the corresponding quantities to achieve the best possible yield

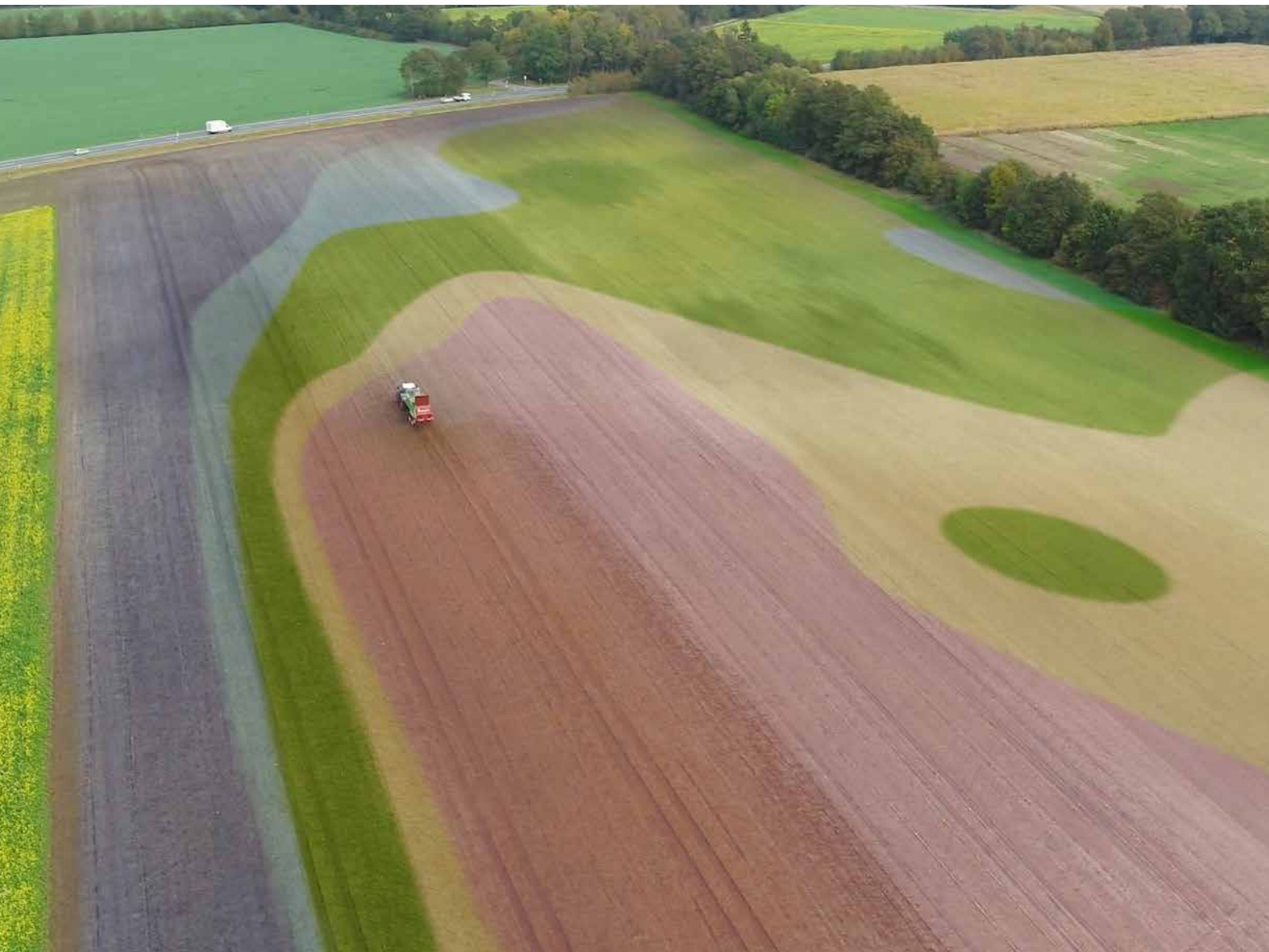
The Strautmann Touch 800 terminal processes all common application map formats, such that the maps can be rapidly and easily read in and processed.

Preparation

- Analysis of ground condition and transfer to a field catalogue
- Preparation of an application map with different discharge quantities per partial area
- Data transfer to a USB data carrier
- Tractor equipped with GPS receiver

Effects

- Spreader position on the field is determined via GPS
- Alignment with application map
- Automatic adaptation of nominal quantity (discharge quantity)
- Automatic adaptation of transport floor speed taking into account the dosage gate setting and the travelling speed



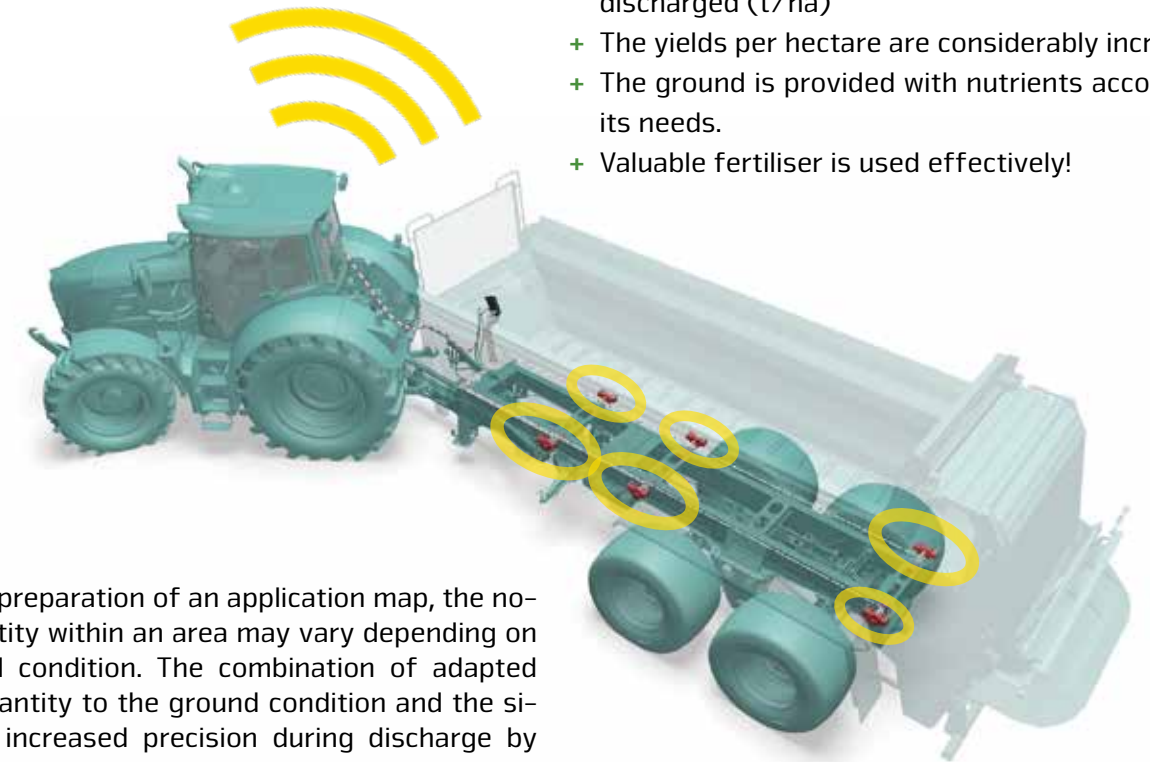
Dynamic weighing system

The dynamic Strautmann weighing system is the basis for exact discharge of organic fertilisers. This system – unlike other weighing systems on the market – permanently registers the weight reduction during discharge and compares it with the set quantity to be discharged. Thus, a discharge to the kilogramme is achieved under any conditions. This is a great advantage in particular in case of inhomogeneous spreading materials such as e.g. manure of different density.

The weighing system is fully integrated in the ISOBUS software.

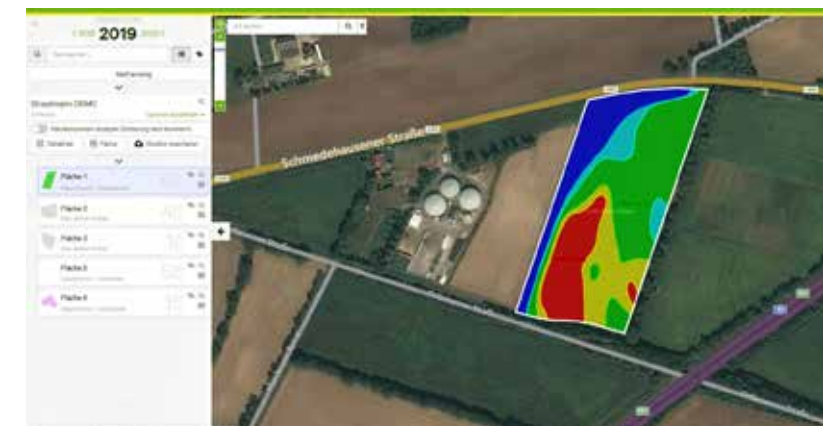
Your benefit

- + The desired quantity of spreading material is discharged (t/ha)
- + The yields per hectare are considerably increased.
- + The ground is provided with nutrients according to its needs.
- + Valuable fertiliser is used effectively!



Due to the preparation of an application map, the nominal quantity within an area may vary depending on the ground condition. The combination of adapted nominal quantity to the ground condition and the significantly increased precision during discharge by means of the dynamic weighing system considerably maximises your yield.

All common application map formats can be very easily read in via a USB stick.



Your advantages

- + Considerable increase of yields
- + Perfect supply of inhomogeneous ground conditions within an area
- + Valuable fertiliser is discharged where it is required
- + Costs are minimised, benefit is increased

Everything under control

– The operating options



Simple direct connection

- Operation of hydraulic functions via direct tractor connection
- Setting of transport floor speed via flow regulation valve



E-control light

- Operation of hydraulic functions via direct tractor connection
- Adjustment of transport floor speed via rotary potentiometer
- Speed monitoring with transport floor stop
- Switching on and off of work lights



E-control

- Comfortable operation of hydraulic functions via toggle switches
- Adjustment of transport floor speed via rotary potentiometer
- Speed monitoring with transport floor stop

ISOBUS controls

The ISOBUS applications of the Strautmann manure spreaders set benchmarks in terms of operating convenience and intelligent machine control. The particularly intuitive operating surfaces make work for the driver significantly easier and ensure utmost discharge accuracy under all conditions. Due to continuously monitoring the discharge quantity, soil fertility and yield are increased while simultaneously reducing the costs for organic fertilisation. The Strautmann ISOBUS software is easily compatible with all common tractor terminals.



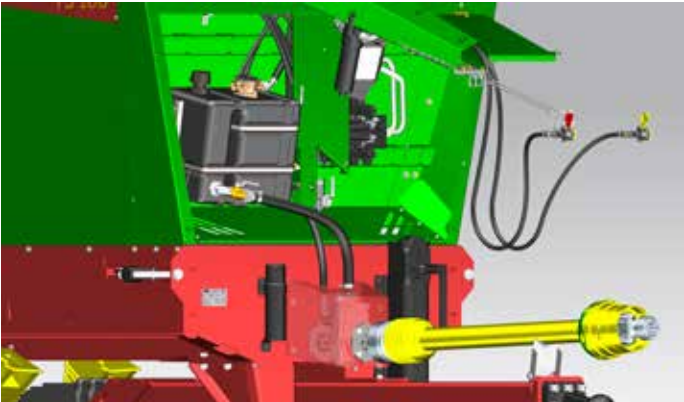
Smart 570

- Optional right-hand terminal
- 5.7" coloured touch screen
- Volume and weight-dependent spreading quantity control possible
- Numerous automatic functions ensuring intuitive and comfortable machine operation



Touch 800

- Large coloured touch screen
- Ideal for spreading according to application maps
- Volume and weight-dependent spreading quantity control possible
- Spreading quantity control according to position possible
- Order management, storage on USB stick



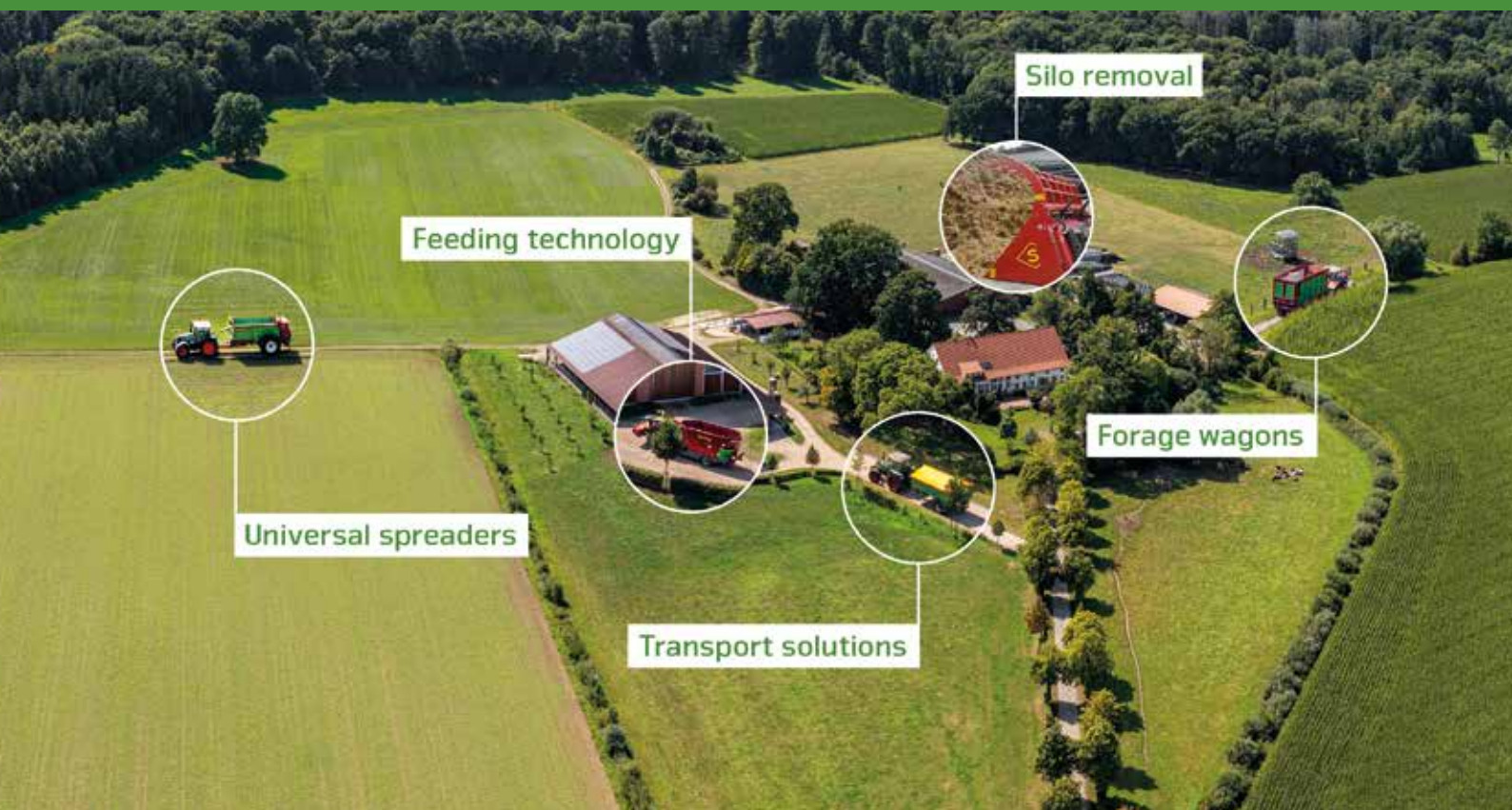
On-board hydraulic system

- Comfortable hitching-up without coupling of hydraulic connections
- No mixing of oils
- Machine can be operated with tractors equipped with too few devices for other applications

Technical data

	TS 140 with 710/70 R 38 tyres	TS 160 with 710/70 R 38 tyres
Dimensions		
Length [m]	8.6	8.86
Height [m]	3.39	3.41
Outside wheel width [m]	2.98	2.98
Charging height [m]	2.78	2.80
Dead weight		
with 2-beater spreading unit from [kg]	6,250	6,500
Gross vehicle weight rating		
Gross vehicle weight rating [kg]	13,000	14,000
Technical overall weight [kg]	14,000	16,000
Power required		
Power required from	81 KW / 110 HP	88 KW / 120 HP
Inside dimensions of superstructure		
Length up to dosage gate [m]	4.63	5.43
Length up to spreading unit [m]	5.28	6.08
Height [m]	1.37	1.37
Width, lower part [m]	1.44	1.44
Width, upper part [m]	1.70 - 1.75	1.70 - 1.75
Width, upper part (with extensions) [m]	2.18 - 2.23	2.18 - 2.23
Loading capacity		
Loading capacity [m³]	14.0	16.0
Loading capacity up to dosage gate [m³]	12.5	14.5
Streuwerk		
Spreading unit clearance [m]	1.65	1.65
Dosage gate clearance [m]	1.65	1.65

Our solutions for your business at a glance:



www.straumann.com

B. Strautmann & Söhne GmbH u. Co. KG



Bielefelder Straße 53
D-49196 Bad Laer
Phone: +49(0)5424/802-0
info@straumann.com
www.straumann.com