



Overview of the Benefits of the Flex-Load Pick-Up

Available only in Strautmann
forage wagons





A unique option for the best forage quality The Flex-Load Pick-up

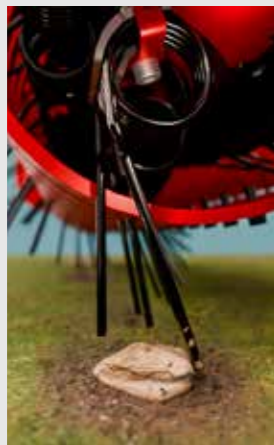
Flexible Loading – Save Time and Labor

The unique Flex-Load pick-up is the result of decades of experience in the field of rotor-type forage wagons. The innovative plastic tines provide unprecedented wear resistance. The flexible tines are hard enough to

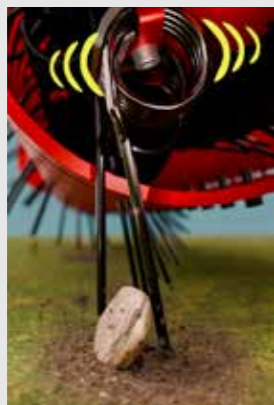
pick up material from the swath optimally, yet flexible enough to adapt to the ground. This minimizes wear and tear, thereby saving labour and costs.

Side Note: How Spring Tine Pick-Ups Work

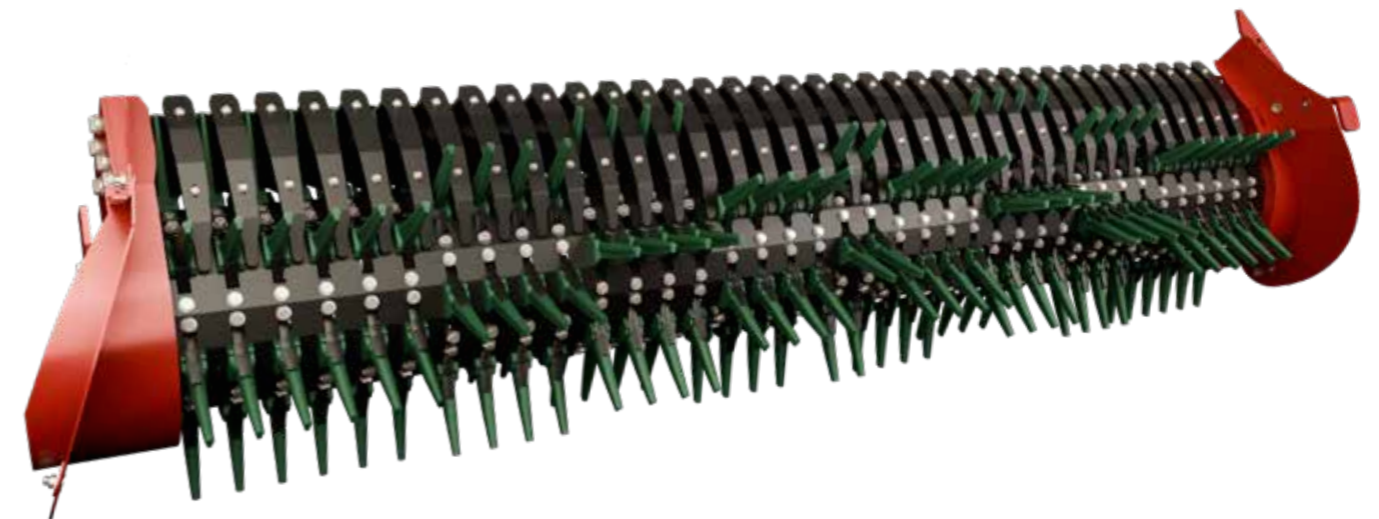
The spring action of a conventional double steel spring tine is achieved by a multi-coil spring formed into the tine's mounting area. When force is applied to the free end of the tine—for example, when the tine encounters a foreign object embedded in the ground—this spiral spring is tensioned.



As soon as the applied force exceeds the threshold at which the obstructing foreign object is torn from the ground, the free end of the tine, along with the foreign object in front of it, shoots forward. The kinetic energy is transferred to the foreign object, causing it to accelerate significantly.



Foreign objects that are propelled forward during loading may strike the rear of the tractor before landing in the swath, where they can be collected by the forage wagon. This is how unwanted foreign objects end up in the feed. This can also cause damage to the tractor, such as from stone chips.



Your Benefits at a Glance

- + Less broken tines
- + Minimized wear on the tines
- + Tine replacement in under a minute
- + Ideal ground adaptation
- + Optimal soil protection
- + Less forage contamination



Soil-Conserving Harvesting



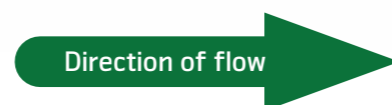
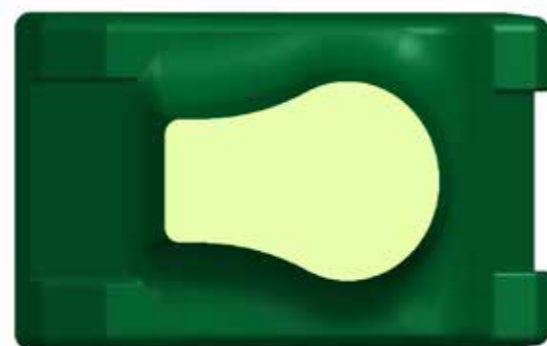
The tines—designed to handle heavy loads

The tines of the Flex-Load pick-up are molded from highly wear-resistant polyurethane. The material used for the tines has flexible properties. Since the tines are thinner at the front, they are less rigid in that area and can avoid foreign objects on the ground better. The oval shape of the tines also ensures that they have more lateral flexibility than the outdated spring

steel tines. This feature in particular prevents stones or soil from being picked up from the ground—the quality of the loaded forage is significantly better. The plastic tines, which have now proven themselves in practice, show little wear and no breakage even after long use.

Conventional spring-tine pick-ups can damage the turf

If the settings are incorrect or the terrain is uneven, rigid steel tines will dig into the ground and cause irreparable damage to the turf. As soil is picked up, the crude ash content in the forage increases. Forage quality declines. This leads to fermentation problems in the forage. The yield potential for subsequent cuts is significantly reduced.



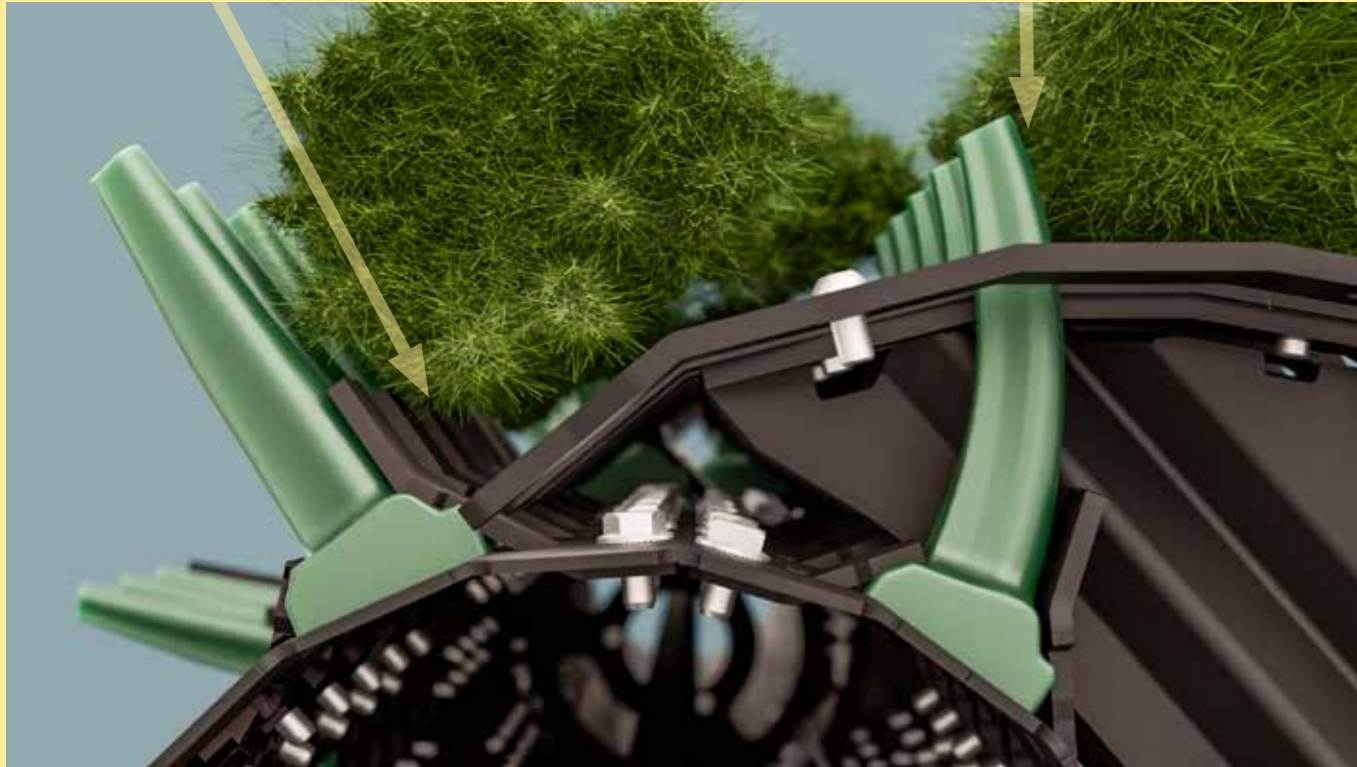
The Flex-Load Pick-Up protects the ground and forage

The flexibility of the plastic tines prevents them from digging into the ground in the event of uneven ground or incorrect settings. The tines bend sideways on contact with the ground. The sward remains undamaged, and yield potential and forage quality are preserved.

Highest-quality feed

The stripper tip and the clamping surface form an obtuse angle, ensuring smooth operation and reliable material transfer.

The back pressure from the conveyed material causes the tine to be pushed back slightly at the top, preventing any material from being drawn in.



In the feed transfer zone, the pick-up's short strippers work in tandem with the tine clamps to handle the forage very gently. In the feed transfer zone, the tine clamps form a very shallow angle with the surface of the strippers, thereby ensuring a gentle feed transfer that has proven effective in practice. As the short strippers take over the material, the active tine end shortens and gently withdraws from the forage. Due to the very shallow angle between the strippers and the tine clamps, the forage is reliably released from the Flex-Load tines. A minimal lateral distance between the tine clamp and

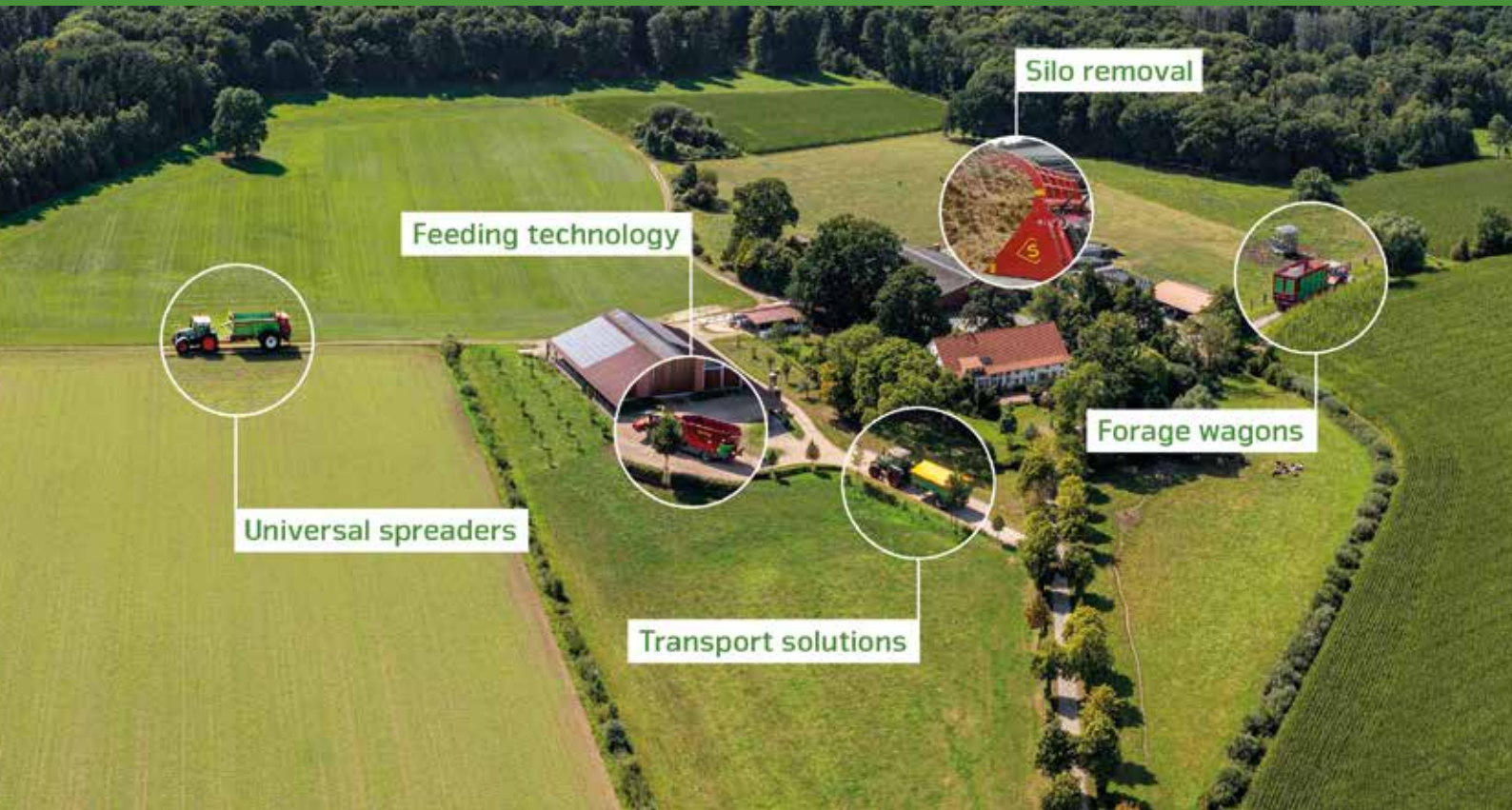
the stripper further enhances this scraping effect. The forage is not pinched and pulled between the strippers, but is gently transferred to the flow roller. This significantly reduces forage loss. Since the special design of the short strippers on the Flex-Load pick-up eliminates the need for a stripper all around the Pick-up. Forage being drawn into such a stripper cage is completely prevented. Trouble-free operation is guaranteed under any conditions.

Low-maintenance and trouble-free



Sealing elements on the sides of the Flex-Load pick-up ensure that no forage can be drawn into the pick-up side panels. This reliably prevents wear on the bearings and the pick-up side panels.

Our solutions for your business at a glance:



www.straumann.com

B. Straumann & Söhne GmbH u. Co. KG



Bielefelder Straße 53
D-49196 Bad Laer
Phone: +49(0)5424/802-0
info@straumann.com
www.straumann.com